

The Three Nails Collection Recipe Guide



www.greaterthangatsby.com

About the Three Nails Collection



This revolutionary 2-part set establishes a new standard for creating rich and dramatic effects. This collection combines the latest tips and tricks between two powerhouse photographers to bring you the ultimate Wedding & Portrait Photoshop action set.

- 75 Three Nails Workflow I Actions
- 50 Three Nails Workflow II Actions
- Compatible With Photoshop CS2-CS6, Creative Cloud (CC), and Elements 11-Current
- Actions Easily Modified and Customized

Workflow 1 Actions

Complete-Workflow Foundations

Clean Slate Foundation
Garden State Foundation
Sundrenched Foundation
Golden Hour Foundation
Ain't no Sunshine Foundation
Try Them All

Enhancement Tones

Brilliant Dance
Blue Velvet
Your New Aesthetic
Your New Aesthetic II
Third Pose
Woman Like You
Brooklyn Theater Fire
Dark Paradise
Clair De Lune
Happenstance
Denim on Denim
Counting Stars
Anti-Swoon
Storyteller
Dog Days Are Over
Dixie Gin
Between Thieves
Darling I Do
That Witch is Wicked
Cosmic Love
Write a Recipe

Retro Film

Record Store
Annie Hall
Retrograde
Vinyl Revival
Try Them All

One-Click Black & Whites

Classically Beautiful
So Dark for April
Heart-Shaped Box
Wanted Dead or Alive
Her, Through His Tears
Try Them All

Moveable Sunlight

Sheer Backlight
Blinding Fire
Blinding Ice
Golden Sunset {Blond}
Golden Sunset {Vivid}
Golden Sunset {Brilliant}

Moveable Candlelight

Sheer Candlelight {Small}
Glowing Candlelight {Small}
Golden Candlelight {Small}
Sheer Candlelight {Medium}
Glowing Candlelight {Medium}
Golden Candlelight {Medium}
Sheer Candlelight {Large}
Glowing Candlelight {Large}
Golden Candlelight {Large}

Painterly Effect

Painterly {Subtle}
Painterly {Soft}
Painterly {Rich}
Painterly {Punchy}
Try Them All

Finishing Brushes

Tilt Shift Smooth {Paint-Off}
Tilt Shift Sharp {Paint-Off}
Tilt Shift Sparkle {Paint-Off}
Depth & Drama {Paint-On}
Crisp Details {Paint-On}
Color Boost {Paint-On}

Web Resize And Sharpen

Facebook Resize & Sharpen 960px
Google+ Resize & Sharpen 1500px
Exact Dimension Resize & Sharpen

Print Resize And Sharpen

Image Size 2000px
Image Size 3000px
Image Size 4000px
Image Size 5000px
Soft Sharpen for Print
Strong Sharpen for Print

Workflow 1 Actions

FOUNDATIONS

Clean Slate Foundation – brightens, pops color, and sharpens

Garden State Foundation – brightens, adds vibrance to tone, add contrast, and sharpens

Sundrenched Foundation – adds warmth and brightens shadows

Golden Hour Foundation – adds rich warm tones, brightens mid-tones, and sharpens

Ain't No Sunshine – darkens with cool, cinematic tones

Workflow 1 Actions

ENHANCEMENT TONES

- Brilliant Dance** - brightens & adds a pop of cyan to shadows
- Blue Velvet** - adds rich blues to shadows
- Your New Aesthetic** - cools down greens
- Your New Aesthetic II** - cools down and deepens shadows
- Third Pose** - soften and mattes blacks
- Woman Like You** - warms and adds contrast
- Brooklyn Theater Fire** - warms up & adds magenta to shadows
- Dark Paradise** - darkens & cools the image
- Clair De Lune** - adds vibrance and a pop of magenta
- Happenstance** - adds vibrance to blues & blacks and brightens whites
- Denim on Denim** - cools down blacks and saturates blues
- Counting Stars** - cools down entire image with a soft magenta
- Anti-Swoon** - mattes shadows
- Storyteller** - desaturates & adds red to shadows
- Dog Days Are Over** - desaturates and cools down
- Dixie Gin** - adds blue tones to blacks and a soft pink into highlights
- Between Thieves** - adds a saturated magenta to entire image
- Darling I Do** - brightens highlights, cools down, & darkens shadows
- That Witch is Wicked** - mattes highlights, deepens & cools shadows
- Cosmic Love** - Brightens & adds a pale magenta to shadows

Workflow 1 Actions

RETRO FILM

Record Store – mattes, darkens and mutes tones

Annie Hall – adds a soft, pale pink and brightens

Retrograde – adds a vibrant, rich red to shadows

Vinyl Revival – brightens and adds a very saturated blue to blacks

Workflow 1 Actions

ONE-CLICK BLACK & WHITES

Classically Beautiful - highly contrasted black & white

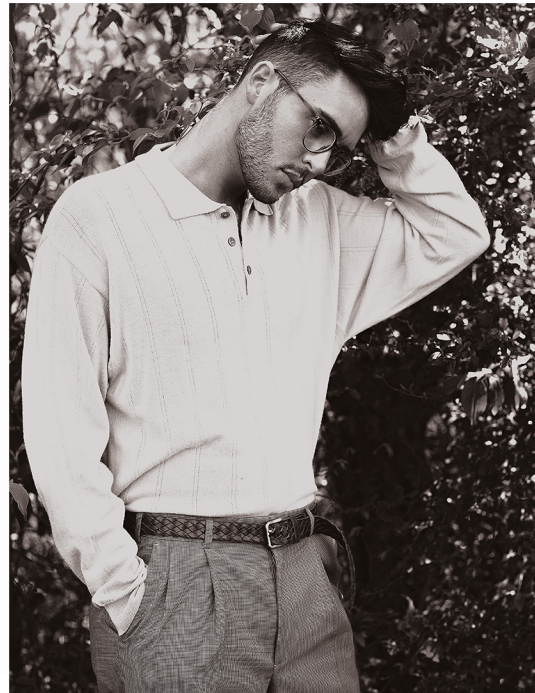
So Dark For April - slightly warm, dark and moody black & white

Heart-Shaped Box - grungy, grainy matte black & white

Wanted Dead Or Alive - dramatic sepia toned black & white

Her, Through His Tears - cyan toned black & white

So Dark For April



Workflow 1 Actions

MOVEABLE SUNLIGHT

Sheer Backlight - white moveable light

Blinding Fire - slightly warm movable light

Blinding Ice - very cool toned moveable light

Golden Sunset (Blond) - yellow moveable light

Golden Sunset (Vivid) - very warm moveable light

Golden Sunset (Brilliant) - warm moveable light with red outer edges

Blinding Fire



Workflow 1 Actions

MOVEABLE CANDLELIGHT

Sheer Candlelight (sm, med, lrg) - pale, warm candlelight

Glowing Candlelight (sm, med, lrg) - orange, warm candlelight

Golden Candlelight (sm, med, lrg) - very warm, intense candlelight

Glowing Candlelight (Med)



Workflow 1 Actions

PAINTERLY EFFECT

Painterly (Subtle) - blends tones for a soft painterly effect

Painterly (Soft) - blends tones, adds contrast

Painterly (Rich) - blends tones, adds contrast and vibrance

Painterly (Punchy) - blends tones, adds strong contrast

Painterly (Punchy)



Workflow 1 Actions

FINISHING BRUSHES

Tilt Shift Smooth (Paint-Off) – paint off for a soft, creamy blur effect

Tilt Shift Sharp (Paint-Off) – paint off for a more detailed blur effect

Tilt Shift Sparkle (Paint-Off) – paint off for a soft, creamy blur effect that adds a slight sparkle effect

Depth & Drama (Paint-On) – paint on a dream soft effect to highlights or shadows

Crisp Details (Paint-On) – paint on to sharpen specific areas

Color Boost (Paint-On) – paint on to boost colors in specific areas

Workflow 1 Recipe Guide



Ain't No Sunshine Foundation 100%, That
Witch Is Wicked 50% & Painterly Soft 35%

www.greaterthangatsby.com

Workflow 1 Recipe Guide



Ain't No Sunshine
Foundation 100%
Denim On Denim 40%
Anti-Swoon 20%



Workflow 1 Recipe Guide



Golden Hour
Foundation 100%
Your New Aesthetic 50%
Soft Painterly 30%



Workflow 1 Recipe Guide



Clean Slate Foundation 100%, Blue Velvet 50% & Painterly Soft 20%

www.greaterthangatsby.com

Workflow 1 Recipe Guide



Golden Hour
Foundation 100%
Retrograde 50%
Painterly Soft 25%



Workflow 2 Actions

Complete-Workflow Foundations

Drink Me Foundation
Rabbit Hole Foundation
Unbirthday Foundation
Cheshire Foundation

Enhancement Tones

AEIOU
Not A Weed
Pocket Watch
Bread Butterfly
Tulgey Wood
Laisy Daisy
10/6
Golden Afternoon
Curiouser
Tweedledee
Tweedledum
Looking Glass
Two Days Slow
Move Down
White Rabbit
I'm Late
Dodo Bird
Mome Raths
Rocking Horse Fly
Mad Hatter
Genus Humanus
Rule 42
Impassible
Croquet
Dark Paradise II
Play Them All

Painterly Tones

Painterly Haze
Painterly Film
Painterly Ocean
Painterly Halo
Painterly Sunlit
Painterly Porcelain
Painterly Midnight
Painterly Forrest

Painterly Black & Whites

Smoke The Monster Out
Painting The Roses infraRed
Off With Their Heads
Raven Like A Writing Desk
Everyone's Mad Here

Overhead Light

Overhead Sheer Haze {H}
Overhead Sheer Haze {V}
Overhead Bright Warmth {H}
Overhead Bright Warmth {V}
Overhead Rich Warmth {H}
Overhead Rich Warmth {V}

Web Resize & Sharpen

Exact Dimension Resize and Sharpen

Workflow 2 Actions

COMPLETE-WORKFLOW FOUNDATIONS

Drink Me Foundation – adds a boost of contrast, enhances tones, adds vibrance to greens, and sharpens

Rabbit Hole Foundation – adds depth and drama with darker more cinematic tones

Unbirthday Foundation – increases saturation, darkens shadows, and adds a pop of contrast

Cheshire Foundation – brightens shadows with a soft, pastel tone, adds a subtle pop and adds a beautiful haze

Workflow 2 Actions

ENHANCEMENT TONES

AEIOU - cools greens

Not A Weed - darkens & mattes

Pocket Watch - warms & mattes

Bread Butterfly - contrasted film look

Tulgey Wood - deepens greens & mattes shadows

Laisy Daisy - warms & pops reds

10/6 - adds cinematic tones & darkens highlights

Golden Afternoon - warms & adds red to shadows

Curiouser - cools greens & adds red to highlights

Tweedledee - desaturates & darkens

Tweedledum - desaturates reds & deepens shadows

Looking Glass - mattes, cools shadows

Two Days Slow - deepens shadows with rich blue tones

Move Down - brightens & adds soft peach

Workflow 2 Actions

ENHANCEMENT TONES

White Rabbit - desaturates & cools

I'm Late - pops red & warms mid-tones

Dodo Bird - richens blues & deepens shadows

Mome Raths - red pop, brightens greens

Rocking Horse Fly - deep contrast, brightens & cools greens

Mad Hatter - deep contrast, film inspired greens

Genus Humanus - dramatic cool tones, burst of cyan

Rule 42 - adds rich blue in shadows & pale yellow to highlights

Impassible - darkens & mattes shadows with red tones

Croquet - brightens yellows and desaturates greens

Dark Paradise II - darkens & pops mid-tones

Workflow 2 Actions

PAINTERLY TONES

Painterly Haze – adds soft pastel cool tones

Painterly Film – brightens greens & cools

Painterly Ocean – adds dramatic contrast & vibrant film tones

Painterly Halo – adds a soft haze on the perimeter

Painterly Sunlit – softens & brightens midtones with a warm pop of color

Painterly Porcelain – cools the image and deepens shadows

Painterly Midnight – darkens & adds a cool, rich tone to the shadows

Painterly Forrest – darkens and pops green tones



Painterly Sunlit

Workflow 2 Actions

PAINTERLY BLACK & WHITES

Smoke The Monster Out – vintage inspired matte B&W

Painting The Roses infraRed – infrared B&W

Off With Their Heads – dark, moody B&W

Raven Like A Writing Desk – noir style B&W

Everyone's Mad Here – darkens & mattes shadows B&W

Painting The Roses infraRed



Workflow 2 Recipe Guide



Cheshire Foundation 65%
Tulgey Wood 70%
Croquet 100%



Workflow 2 Recipe Guide



Rabbit Hole 100%
Dark Paradise 100%
Dodo Bird 50%
Painterly Midnight 30%



Workflow 2 Recipe Guide



Rabbit Hole 100%

Mome Raths 70%

Painterly Porcelain 30%



Workflow 2 Recipe Guide



Drink Me Foundation 100%
Croquet 100%
Curiouser 40%
Painterly Halo 30%



Workflow 2 Recipe Guide



Drink Me Foundation 100%
AEIOU 100%
Dodo Bird 40%
Painterly Ocean 40%



Workflow 2 Recipe Guide



Rabbit Hole Foundation 100%, Two Days
Slow 50% & Painterly Midnight 50%

www.greaterthangatsby.com

Workflow 2 Recipe Guide



Painterly Midnight 100%
Overhead Sheer Haze 20%



Workflow 2 Recipe Guide



Unbirthday Foundation 100%
AEIOU 80%
Bread Butterfly 30%



Workflow 2 Recipe Guide



Drink Me Foundation 100%,
Mad Hatter 100% & Croquet 50%

www.greaterthangatsby.com

Workflow 2 Recipe Guide



Unbirthday Foundation 100%,
Lazy Dazy 75% & Painterly Ocean 100%

www.greaterthangatsby.com

Workflow 2 Recipe Guide



Rabbit Hole Foundation 100%,
Curiouser 75% & Painterly Film 50%

www.greaterthangatsby.com

Workflow 2 Recipe Guide



Move Down 100%
Rocking Horse Fly 100%
Painterly Halo 50%



Workflow 2 Recipe Guide



Bread Butterfly 100%
Golden Afternoon 100%
Painterly Sunlit 50%



Workflow 2 Recipe Guide



Unbirthday Foundation 100%,
Rocking Horse Fly 75% & Impassible 100%

www.greaterthangatsby.com

Workflow 2 Recipe Guide



Drink Me Foundation 100%
Curiouser 100%
Painterly Film 75%

